



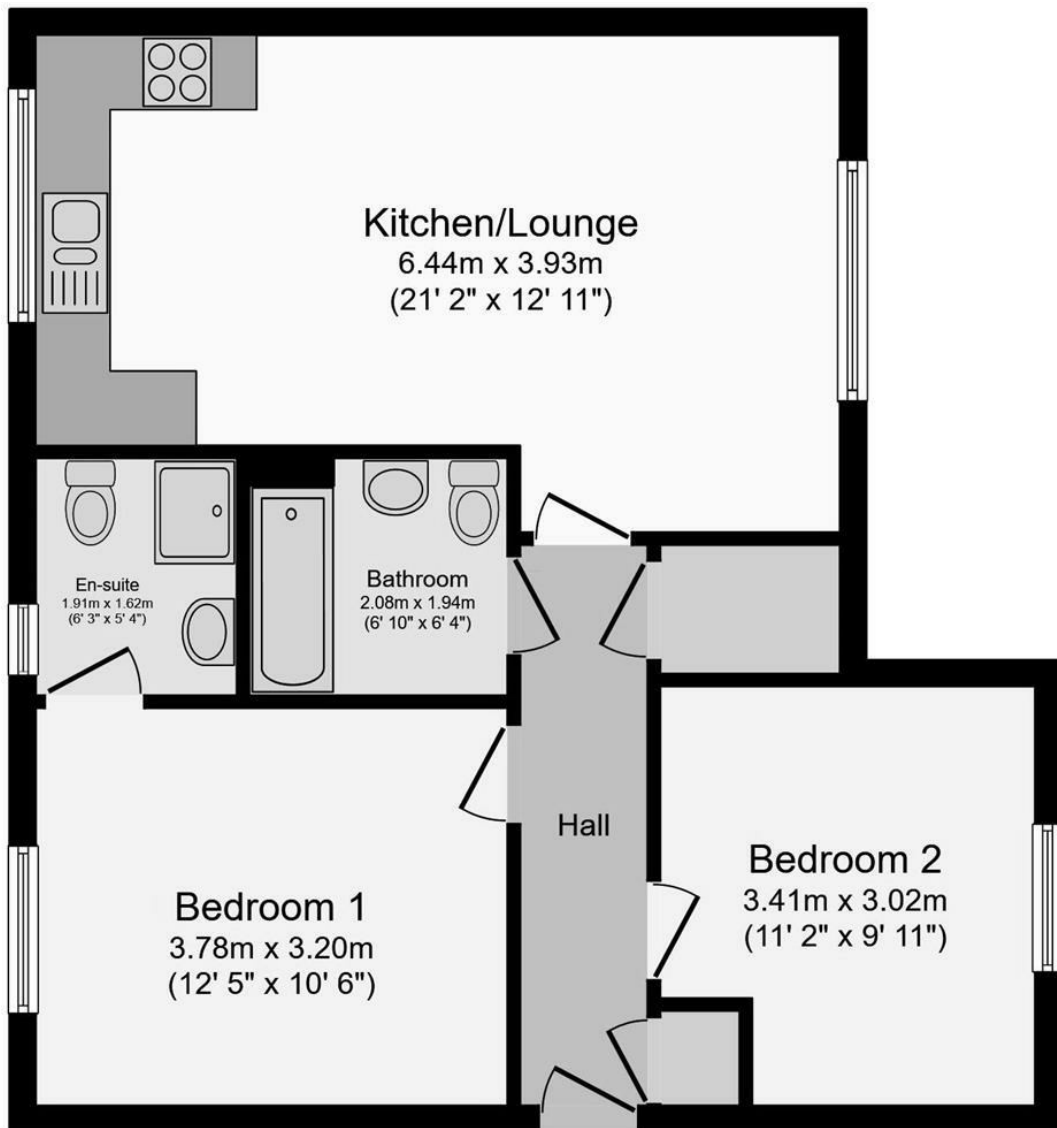
Apt 3 Jasmine House Millbrook Gardens, Blythe Bridge, Stoke-On-Trent, ST11 9JQ

A well presented first floor apartment set in a quiet position and offering spacious accommodation comprising: entrance hall with storage cupboards, living room diner, open plan fitted kitchen, two bedrooms, main bedroom with an ensuite shower room, and bathroom. Benefitting from uPVC double glazing, gas central heating and an allocated parking space. Conveniently located within strolling distance of the amenities of Blythe Bridge, Blythe Bridge train station, and with easy access to commuter routes.

Available immediately - Unfurnished

Sorry No Pets

£825 PCM



Total floor area 61.1 m² (657 sq.ft.) approx

Energy Efficiency Rating		Current	Potential
Very energy efficient - lower running costs			
(92 plus) A			
(81-91) B			
(69-80) C			
(55-68) D			
(39-54) E			
(21-38) F			
(1-20) G			
Not energy efficient - higher running costs			
England & Wales		78	78
EU Directive 2002/91/EC			

Environmental Impact (CO ₂) Rating		Current	Potential
Very environmentally friendly - lower CO ₂ emissions			
(92 plus) A			
(81-91) B			
(69-80) C			
(55-68) D			
(39-54) E			
(21-38) F			
(1-20) G			
Not environmentally friendly - higher CO ₂ emissions			
England & Wales		81	81
EU Directive 2002/91/EC			